

---

## Product Datasheet

### Calnexin antibody (orb20292)

**Description**

Goat polyclonal antibody to Calnexin

**Species/Host**

Goat

**Reactivity**

Bovine, Canine, Human, Mouse, Porcine, Rat

**Conjugation**

Unconjugated

**Tested Applications**

ELISA, IF, IHC, WB

**Target**

Calnexin

**Preservatives**

Supplied at 0.5 mg/ml in Tris saline, 0.02% sodium azide, pH 7.3 with 0.5% bovine serum albumin. Aliquot and store at -20°C. Minimize freezing and thawing.

**Storage**

Aliquot and store at -20°C. Minimize freezing and thawing.

**Note**

For research use only

**Application notes**

ELISA: Peptide ELISA: antibody detection limit dilution 1:32000. WB: Approx. 100kDa band observed in Mouse Heart, Human Brain (Cerebellum), NIH3T3 and HeLa lysates (calculated MW of 67.6kDa according to Human NP\_001737.1 and 67.2kDa according to Mouse NP\_001103969.1). The observed molecular weight corresponds to earlier findings in literature with different antibodies (Oliver et al., J Biol Chem. 1996 Jun 7;271(23):13691-6., PMID: 8662691). Recommended concentration: 0.3-1 µg/ml.

**Protein Sequence**

SKTPELNLDQFHDKT

**Clonality**

Polyclonal

**MW**

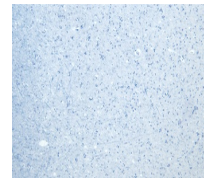
67.6

**Entrez**
**821**
**Dilution Range**

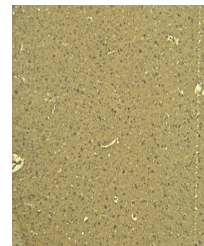
ELISA: 1:128000, WB: 0.1-1µg/ml, IHC-P: 5µg/ml, IF/ICC: 10µg/ml

**Expiration Date**

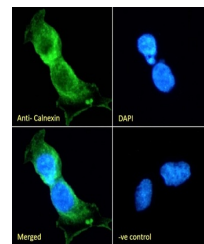
12 months from date of receipt.



orb20292 Negative Control showing staini...



orb20292 (6µg/ml) staining of paraffin ...



orb20292 Immunofluorescence analysis of ...