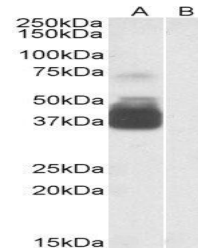


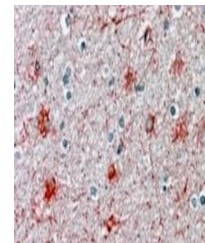
## Product Datasheet

### P2RX7 antibody (orb20291)

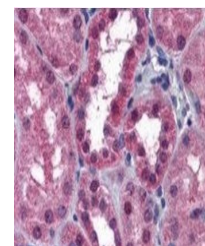
<b>Description</b>	Goat polyclonal antibody to P2RX7
<b>Species/Host</b>	Goat
<b>Reactivity</b>	Canine, Human, Mouse, Rat
<b>Conjugation</b>	Unconjugated
<b>Tested Applications</b>	ELISA, FC, IF, IHC, WB
<b>Target</b>	P2RX7 / P2X7 receptor
<b>Preservatives</b>	Supplied at 0.5 mg/ml in Tris saline, 0.02% sodium azide, pH 7.3 with 0.5% bovine serum albumin. Aliquot and store at -20°C. Minimize freezing and thawing.
<b>Storage</b>	Aliquot and store at -20°C. Minimize freezing and thawing.
<b>Note</b>	For research use only
<b>Application notes</b>	ELISA: Peptide ELISA: antibody detection limit dilution 1:16000.WB: Approx 37kDa and 70kDa band observed in Human Brain (Frontal Cortex) lysates (calculated MW of 68.6kDa according to NP_002553.2). Recommended concentration: 1-3 µg/ml.
<b>Protein Sequence</b>	YETNKVTRIQSMNY
<b>Clonality</b>	Polyclonal
<b>MW</b>	68.6
<b>Entrez</b>	<b>5027</b>
<b>Dilution Range</b>	ELISA: 1:16000, WB: 1-3 µg/ml, IHC-P: 3.75 µg/ml
<b>Expiration Date</b>	12 months from date of receipt.



Western blot analysis of Human Brain (Fr...



Immunohistochemical staining of Human Br...



Immunohistochemical staining of Human Ki...