
Product Datasheet

HMOX2 antibody (orb20282)

Description

Goat polyclonal to HMOX2

Species/Host

Goat

Reactivity

Bovine, Human, Mouse

Conjugation

Unconjugated

Tested Applications

ELISA, IHC, WB

Target

HMOX2

Preservatives

Supplied at 0.5 mg/ml in Tris saline, 0.02% sodium azide, pH 7.3 with 0.5% bovine serum albumin. Aliquot and store at -20°C. Minimize freezing and thawing.

Storage

Aliquot and store at -20°C. Minimize freezing and thawing.

Note

For research use only

Application notes

Reported variants represent identical protein: NP_002125.3, NP_001120676.1, NP_001120678.1, NP_001120677.1. Approx 37 kDa band observed in lysates of cell line K562 (calculated MW of 36.0 kDa according to NP_002125.3). Recommended concentration: 0.3-1 µg/ml. ELISA: Peptide ELISA: antibody detection limit dilution 1:32000. IHC: In paraffin embedded Human Pancreas cancer shows increased staining of invading cancer cells. Recommended concentration, 2-4 µg/ml. WB: Approx 37kDa band observed in lysates of cell line K562 (calculated MW of 36.0kDa according to NP_002125.3). Recommended concentration: 0.3-1 µg/ml.

Protein Sequence

DQAGSTLARETLED

Clonality

Polyclonal

MW

36

Entrez
3163
Dilution Range

ELISA: 1:32000, WB: 0.3-1 µg/ml, IHC-P: 2-4µg/ml

Expiration Date

12 months from date of receipt.



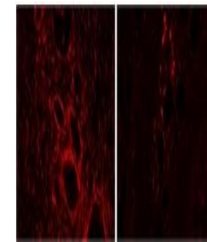
 250kDa
150kDa
100kDa

50kDa
37kDa

25kDa
20kDa

15kDa

Western blot analysis of K562 cell lysat...



Immunofluorescence analysis of Human Pan...