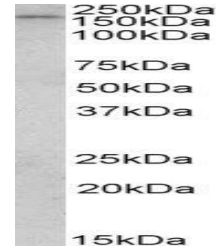


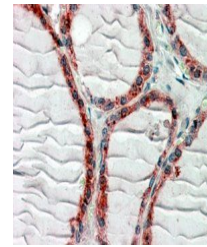
Product Datasheet

CLIP1 antibody (orb20278)

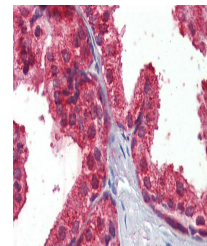
Description	Goat polyclonal antibody to CLIP1
Species/Host	Goat
Reactivity	Canine, Human, Mouse, Porcine, Rat
Conjugation	Unconjugated
Tested Applications	ELISA, IHC, WB
Target	Restin / CLIP1
Preservatives	Supplied at 0.5 mg/ml in Tris saline, 0.02% sodium azide, pH 7.3 with 0.5% bovine serum albumin. Aliquot and store at -20°C. Minimize freezing and thawing.
Storage	Aliquot and store at -20°C. Minimize freezing and thawing.
Note	For research use only
Application notes	ELISA: Peptide ELISA: antibody detection limit dilution 1:8000.IHC: Immunohistochemistry: In paraffin embedded Human Thyroid Gland shows structured cytoplasm staining in active epithelial cells. Recommended concentration, 2-4ug/ml.WB: Approx 160kDa band observed in Human Breast Cancer lysates (calculated MW of 161kDa according to NP_002947.1. Recommended concentration: 1-3 µg/ml.
Protein Sequence	PHSTHHGSRGEERP
Clonality	Polyclonal
MW	161; 157
Entrez	6249
Dilution Range	ELISA: 1:8000, WB: 1-3 µg/ml, IHC-P: 2.5 µg/ml
Expiration Date	12 months from date of receipt.



orb20278 (1ug/ml) staining of Human Brea...



orb20278 (2.5ug/ml) staining of paraffin...



Immunohistochemical staining of Human Pr...