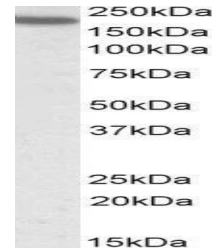


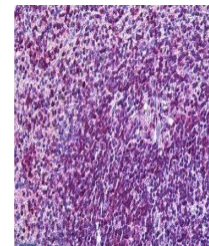
## Product Datasheet

### ITGAL antibody (orb20269)

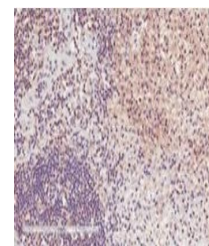
<b>Description</b>	Goat polyclonal antibody to ITGAL
<b>Species/Host</b>	Goat
<b>Reactivity</b>	Human
<b>Conjugation</b>	Unconjugated
<b>Tested Applications</b>	ELISA, IHC, WB
<b>Target</b>	CD11A / integrin alpha L
<b>Preservatives</b>	Supplied at 0.5 mg/ml in Tris saline, 0.02% sodium azide, pH 7.3 with 0.5% bovine serum albumin. Aliquot and store at -20°C. Minimize freezing and thawing.
<b>Storage</b>	Aliquot and store at -20°C. Minimize freezing and thawing.
<b>Note</b>	For research use only
<b>Application notes</b>	ELISA: Peptide ELISA: antibody detection limit dilution 1:16000.WB: Approx 200kDa band observed in Human Spleen and Tonsil lysates (calculated MW of 129kDa according to NP_002200.2). The observed molecular weight corresponds to earlier findings with different antibodies from other commercial sources. Recommended concentration: 0.5-2 µg/ml.
<b>Protein Sequence</b>	YQVRIQPSIHDHN
<b>Clonality</b>	Polyclonal
<b>MW</b>	129; 119
<b>Entrez</b>	<b>3683</b>
<b>Dilution Range</b>	ELISA: 1:16000, WB: 0.5-2 µg/ml, IHC-P: 3.75 µg/ml
<b>Expiration Date</b>	12 months from date of receipt.



Western blot analysis of Human Spleen Ly...



Immunohistochemical staining of Human Sp...



Immunohistochemical staining of Human Ly...