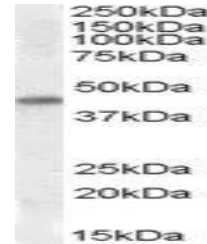


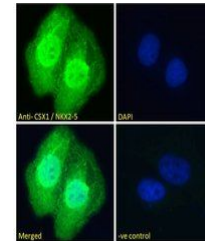
## Product Datasheet

### CSX1 / NKX2-5 Antibody (orb20262)

<b>Description</b>	Goat polyclonal antibody to NKX2-5
<b>Reactivity</b>	Bovine, Canine, Human, Mouse, Rat
<b>Conjugation</b>	Unconjugated
<b>Tested Applications</b>	ELISA, IHC, WB
<b>Target</b>	CSX1 / NKX2-5
<b>Preservatives</b>	Supplied at 0.5 mg/ml in Tris saline, 0.02% sodium azide, pH 7.3 with 0.5% bovine serum albumin. Aliquot and store at -20°C. Minimize freezing and thawing.
<b>Note</b>	For research use only
<b>Application notes</b>	WB: Approx. 38kDa band observed in Human, Mouse and Rat Heart lysates (calculated MW of 34.9kDa according to Human NP_004378.1, 34.2kDa according to Mouse NP_032726.1 and 34.3kDa according to Rat NP_446103.2). Recommended concentration: 1-3µg/ml. Primary incu. IHC: Paraffin embedded Human Heart. Recommended concentration: 5-6µg/ml.
<b>Protein Sequence</b>	PRAYSDPDPKADPR
<b>Dilution Range</b>	ELISA: 1:32000, WB: 0.1-0.5 µg/ml, IHC-P: 10 µg/ml
<b>Expiration Date</b>	12 months from date of receipt.



Western blot analysis of Human Heart lysates.



Immunofluorescence analysis of paraformaldehyde-fixed cells.



Immunohistochemical staining of Human Heart tissue.