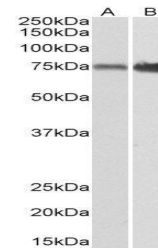


Product Datasheet

XPNPEP1 antibody (orb20261)

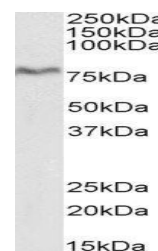
Description	Goat polyclonal antibody to XPNPEP1
Species/Host	Goat
Reactivity	Bovine, Canine, Human, Mouse, Porcine, Rat
Conjugation	Unconjugated
Tested Applications	ELISA, IHC, WB
Target	XPNPEP1
Preservatives	Supplied at 0.5 mg/ml in Tris saline, 0.02% sodium azide, pH 7.3 with 0.5% bovine serum albumin. Aliquot and store at -20°C. Minimize freezing and thawing.
Storage	Aliquot and store at -20°C. Minimize freezing and thawing.
Note	For research use only
Application notes	ELISA: Peptide ELISA: antibody detection limit dilution 1:32000.WB: Approx 80kDa band observed in Human Heart, Skeletal Muscle and Pancreas lysates (calculated MW of 69.9kDa according to NP_065116.2). Recommended concentration: 0.3-1 µg/ml.
Protein Sequence	LIRETQPISKQH
Clonality	Polyclonal
MW	69.9
Entrez	7511
Dilution Range	ELISA: 1:32000, WB: 0.1-0.3 µg/ml, IHC-P: 5 µg/ml
Expiration Date	12 months from date of receipt.



Western blot analysis of Mouse (Lane1) a...



Western blot analysis of Human Pancreas ...



Western blot analysis of Pig Pancreas ly...