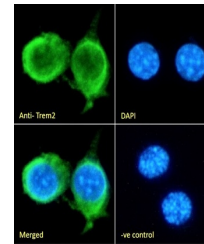


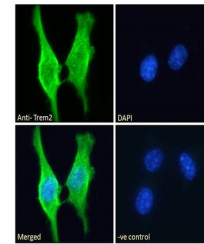
Product Datasheet

Trem2 antibody (orb20251)

Description	Goat polyclonal antibody to Trem2
Species/Host	Goat
Reactivity	Mouse
Conjugation	Unconjugated
Tested Applications	ELISA, IF
Target	Trem2 (mouse)
Preservatives	Supplied at 0.5 mg/ml in Tris saline, 0.02% sodium azide, pH 7.3 with 0.5% bovine serum albumin. Aliquot and store at -20°C. Minimize freezing and thawing.
Storage	Aliquot and store at -20°C. Minimize freezing and thawing.
Note	For research use only
Application notes	ELISA: Peptide ELISA: antibody detection limit dilution 1:16000.WB: Approx 28kDa band observed in Mouse Liver lysates (calculated MW of 24.5kDa according to NP_112544.1). Recommended concentration: 0.3-1 µg/ml.
Protein Sequence	QVEHSTSRNQET
Clonality	Polyclonal
MW	24.5
Dilution Range	ELISA: 1:32000, WB: 1 µg/ml, IHC-P: 10 µg/ml
Expiration Date	12 months from date of receipt.



orb20251
Immunofluorescence
analysis of ...



orb20251
Immunofluorescence
analysis of ...



orb20251 (0.3ug/ml)
staining of Mouse
Li...