

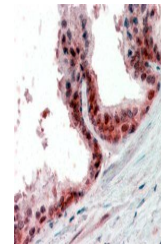
Product Datasheet

PPP4C antibody (orb20241)

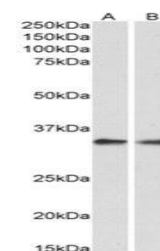
Description	Goat polyclonal antibody to PPP4C
Species/Host	Goat
Reactivity	Canine, Human, Rat
Conjugation	Unconjugated
Tested Applications	ELISA, IHC, WB
Target	PPP4C
Preservatives	Supplied at 0.5 mg/ml in Tris saline, 0.02% sodium azide, pH 7.3 with 0.5% bovine serum albumin. Aliquot and store at -20°C. Minimize freezing and thawing.
Storage	Aliquot and store at -20°C. Minimize freezing and thawing.
Note	For research use only
Application notes	ELISA: Peptide ELISA: antibody detection limit dilution 1:16000.IHC: In paraffin embedded Human Prostate shows nuclear staining of secretory cells in the gland. Recommended concentration, 2-4ug/ml.WB: Approx 35kDa band observed in HEK293, A431 and HeLa lysates (calculated MW of 35.1kDa according to NP_002711.1). Recommended concentration: 0.1-0.3 µg/ml.
Protein Sequence	PQETRGIPSKKP
Clonality	Polyclonal
MW	35.1
Entrez	5531
Dilution Range	ELISA: 1:16000, WB: 0.1-0.3 µg/ml, IHC-P: 2-4µg/ml
Expiration Date	12 months from date of receipt.



orb20241 (0.3ug/ml) staining of HEK293 I...



orb20241 (2.5ug/ml) staining of paraffin...



Western blot analysis of staining of Rat...