

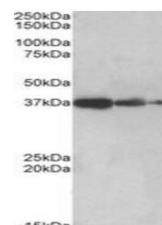
Product Datasheet

PPP2R4 antibody (orb20236)

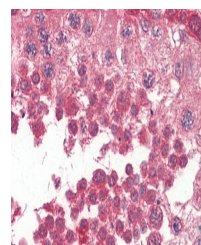
Description	Goat polyclonal antibody to PPP2R4
Species/Host	Goat
Reactivity	Bovine, Canine, Human, Mouse, Rat
Conjugation	Unconjugated
Tested Applications	ELISA, IHC, WB
Target	PPP2R4 / PP2A
Preservatives	Supplied at 0.5 mg/ml in Tris saline, 0.02% sodium azide, pH 7.3 with 0.5% bovine serum albumin. Aliquot and store at -20°C. Minimize freezing and thawing.
Storage	Aliquot and store at -20°C. Minimize freezing and thawing.
Note	For research use only
Application notes	ELISA: Peptide ELISA: antibody detection limit dilution 1:32000.WB: Approx 37kDa band observed in Human Liver lysates and in lysates of cell line HepG2 (calculated MW of 36.8kDa according to NP_066954.2). Recommended concentration: 0.5-2 µg/ml.
Protein Sequence	GSLLPHPVTSG
Clonality	Polyclonal
MW	40.7; 36.8; 31.9
Entrez	5524
Dilution Range	ELISA: 1:32000, WB: 0.5-2 µg/ml, IHC-P: 3.75 µg/ml
Expiration Date	12 months from date of receipt.



Western blot analysis of Human Liver lys...



Western blot analysis of Human Liver lys...



Immunohistochemical staining of Human Te...