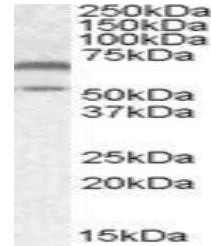


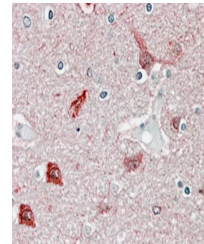
Product Datasheet

CAMK2A antibody (orb20232)

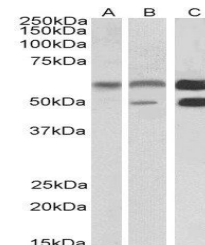
Description	Goat polyclonal antibody to CAMK2A
Species/Host	Goat
Reactivity	Human, Mouse, Rat
Conjugation	Unconjugated
Tested Applications	ELISA, FC, IF, WB
Target	CAMK2
Preservatives	Supplied at 0.5 mg/ml in Tris saline, 0.02% sodium azide, pH7.3 with 0.5% bovine serum albumin.
Storage	Aliquot and store at -20°C. Minimize freezing and thawing.
Note	For research use only
Application notes	ELISA: Peptide ELISA: antibody detection limit dilution 1:64000.WB: Approx 55+65kDa bands observed in Human Brain (Cerebellum) and Mouse Brain lysates (calculated MW of 55.3kDa according to Human NP_057065.2 and of 54.1 according to Human NP_741960.1 and Mouse NP_803126.1). The observed molecular weight corresponds to earlier findings with different antibodies from other commercial sources. Recommended concentration: 0.1-0.3 µg/ml.
Protein Sequence	PRTAQSEETRVWHR
Clonality	Polyclonal
MW	55.3; 54.1
Entrez	815
Dilution Range	ELISA: 1:64000, WB: 0.03--0.3 µg/ml, IHC-P: 3.75 µg/ml
Expiration Date	12 months from date of receipt.



Western blot analysis of Mouse Brain lysates.



Immunohistochemical analysis of formalin-fixed mouse brain tissue.



Western blot analysis of Human Cerebellum lysates.