
Product Datasheet

SCARB2 antibody (orb20222)

Description

Goat polyclonal antibody to SCARB2

Species/Host

Goat

Reactivity

Human, Mouse

Conjugation

Unconjugated

Tested Applications

ELISA, IHC, WB

Target

LIMP2 / SCARB2

Preservatives

Supplied at 0.5 mg/ml in Tris saline, 0.02% sodium azide, pH 7.3 with 0.5% bovine serum albumin. Aliquot and store at -20°C. Minimize freezing and thawing.

Storage

Aliquot and store at -20°C. Minimize freezing and thawing.

Note

For research use only

Application notes

IHC: In paraffin embedded Human Cerebral Cortex shows lysosomal staining. Recommended concentration, 3-5µg/ml. WB: Approx. 80kDa band observed in Human Brain (Cortex and Cerebellum) lysates (calculated MW of 54.3kDa according to NP_005497.1). The observed molecular weight corresponds to earlier findings in literature with different antibodies (Fujita et al, Biochem Biophys Res Commun. 1992 Apr 30;184(2):604-11.; PMID: 1374238). Recommended concentration: 0.1-0.3 µg/ml.

Protein Sequence

NKANIQFGDNGTTIS

Clonality

Polyclonal

MW

54.3

Entrez

950

Dilution Range

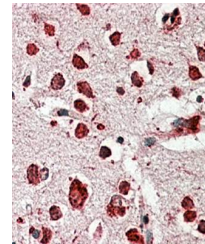
ELISA: 1:4000, WB: 0.1-0.3 µg/ml, IHC-P: 3-5µg/ml

Expiration Date

12 months from date of receipt.




Western blot analysis of human cerebral ...



Immunohistochemical analysis of formalin...