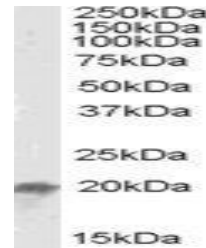


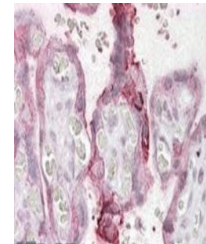
Product Datasheet

UBE2F antibody (orb20213)

Description	Goat polyclonal antibody to UBE2F
Species/Host	Goat
Reactivity	Bovine, Canine, Human, Mouse, Rat
Conjugation	Unconjugated
Tested Applications	ELISA, IHC, WB
Target	NCE2 / UBE2F
Preservatives	Supplied at 0.5 mg/ml in Tris saline, 0.02% sodium azide, pH 7.3 with 0.5% bovine serum albumin. Aliquot and store at -20°C. Minimize freezing and thawing.
Storage	Aliquot and store at -20°C. Minimize freezing and thawing.
Note	For research use only
Application notes	ELISA: Peptide ELISA: antibody detection limit dilution 1:32000.WB: Approx. 20kDa band observed in Mouse Liver lysates (calculated MW of 21.1kDa according to Human NP_542409.1 and to Mouse NP_080730.1). Recommended concentration: 0.05-0.2 µg/ml.
Protein Sequence	HLRDKEDFRNKVDD
Clonality	Polyclonal
MW	21.1
Entrez	140739
Dilution Range	ELISA: 1:32000, WB: 0.05-0.2 µg/ml, IHC-P: 2.5-3.8µg/ml
Expiration Date	12 months from date of receipt.



Western blot analysis of Mouse Liver lys...



Immunohistochemical staining of Human Pl...