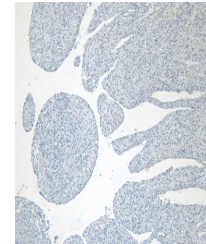


## Product Datasheet

### CAV3 antibody (orb20210)

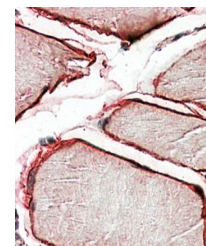
<b>Description</b>	Goat polyclonal antibody to CAV3
<b>Species/Host</b>	Goat
<b>Reactivity</b>	Bovine, Canine, Human, Mouse, Porcine, Rat
<b>Conjugation</b>	Unconjugated
<b>Tested Applications</b>	ELISA, IHC, WB
<b>Target</b>	CAV3
<b>Preservatives</b>	Supplied at 0.5 mg/ml in Tris saline, 0.02% sodium azide, pH 7.3 with 0.5% bovine serum albumin. Aliquot and store at -20°C. Minimize freezing and thawing.
<b>Storage</b>	Aliquot and store at -20°C. Minimize freezing and thawing.
<b>Note</b>	For research use only
<b>Application notes</b>	IHC: In paraffin embedded Human Skeletal Muscle shows peripheral staining of fibres. Recommended concentration, 3-5µg/ml.WB: Approx. 23kDa band observed in Human, Mouse and Rat Heart lysates (calculated MW of 17.3kDa according to NP_203123.1). The observed molecular weight corresponds to earlier findings with different antibodies from other commercial sources. Recommended concentration: 0.3-1 µg/ml.
<b>Protein Sequence</b>	EHTDLEAQIVKDIH
<b>Clonality</b>	Polyclonal
<b>MW</b>	17.3
<b>Entrez</b>	<b>859</b>
<b>Dilution Range</b>	ELISA: 1:4000, WB: 0.1-0.3 µg/ml, IHC-P: 3-5µg/ml
<b>Expiration Date</b>	12 months from date of receipt.



orb20210 Negative Control showing staini...



Western blot analysis of Human Heart lys...



Immunohistochemical analysis of human sk...