
Product Datasheet

ASAM antibody (orb20208)

Description

Goat polyclonal antibody to ASAM

Species/Host

Goat

Reactivity

Human

Conjugation

Unconjugated

Tested

ELISA, WB

Applications
Target

CLMP

Preservatives

Supplied at 0.5 mg/ml in Tris saline, 0.02% sodium azide, pH 7.3 with 0.5% bovine serum albumin. Aliquot and store at -20°C. Minimize freezing and thawing.

Storage

Aliquot and store at -20°C. Minimize freezing and thawing.

Note

For research use only

Application notes

ELISA: Peptide ELISA: antibody detection limit dilution 1:32000. WB: Preliminary experiments gave an approx 55kDa band in Human Placenta lysates after 1 µg/ml antibody staining. Please note that currently we cannot find an explanation in the literature for the band we observe given the calculated size of 41.3kDa according to NP_079045.1. The 55kDa band was successfully blocked by incubation with the immunizing peptide. We would appreciate any feedback from people in the field - have any results been reported with other antibodies/lysates Have any further splice variants/modified forms been reported

Protein Sequence

PSMIPSQSRAFQ

Clonality

Polyclonal

MW

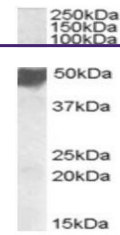
41.3

Entrez
[79827](#)
Dilution Range

ELISA: 1:4000, WB: 1-3 µg/ml

Expiration Date

12 months from date of receipt.



Western blot analysis of Human Placenta ...