

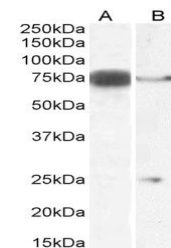
Product Datasheet

DLL1 antibody (orb20203)

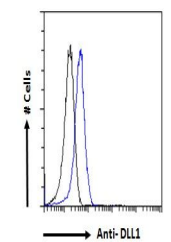
Description	Goat polyclonal to DLL1
Species/Host	Goat
Reactivity	Human, Mouse, Rat
Conjugation	Unconjugated
Tested Applications	ELISA, FC, IF, WB
Target	DLL1
Preservatives	Supplied at 0.5 mg/ml in Tris saline, 0.02% sodium azide, pH 7.3 with 0.5% bovine serum albumin. Aliquot and store at -20°C. Minimize freezing and thawing.
Storage	Aliquot and store at -20°C. Minimize freezing and thawing.
Note	For research use only
Application notes	ELISA: Peptide ELISA: antibody detection limit dilution 1:16000.WB: Approx. 75kDa band observed in Mouse Heart and Rat Heart lysates (calculated MW of 78.1kDa according to Human NP_005609.3, 78.5kDa according to Mouse NP_031891.2 and 77.4kDa according to Rat NP_114452.1). Recommended concentration: 0.3-1 µg/ml.
Protein Sequence	ATQRHLTVGEEWSQD
Clonality	Polyclonal
MW	78.1
Entrez	28514
Dilution Range	ELISA: 1:16000, WB: 0.3-7 µg/ml, IHC-P: 10ug/ml
Expiration Date	12 months from date of receipt.



orb20203 (0.3ug/ml) staining of Rat Heart...



WB analysis of Mouse Heart (A), Rat Panc...



Flow cytometric analysis of HeLa cells u...