
Product Datasheet

RNF139 antibody (orb20189)

Description

Goat polyclonal antibody to RNF139

Species/Host

Goat

Reactivity

Canine, Human

Conjugation

Unconjugated

Tested Applications

ELISA, IHC, WB

Target

TRC8

Preservatives

Supplied at 0.5 mg/ml in Tris saline, 0.02% sodium azide, pH 7.3 with 0.5% bovine serum albumin. Aliquot and store at -20°C. Minimize freezing and thawing.

Storage

Aliquot and store at -20°C. Minimize freezing and thawing.

Note

For research use only

Application notes

ELISA: Peptide ELISA: antibody detection limit dilution 1:16000. IHC: In paraffin embedded Human Placenta shows membranous staining in the cytotrophoblasts. Recommended concentration, 3-4 µg/ml. WB: Experiments gave bands at approx. 150kDa and 50kDa in Human Skeletal Muscle lysate after 0.5 µg/ml antibody staining. This protein has a calculated MW of 76.0kDa according to NP_009149.2. The observed molecular weight corresponds to earlier findings with different antibodies from other commercial sources. Recommended concentration: 0.5-1.5 µg/ml.

Protein Sequence

HTGAAAEFNDT

Clonality

Polyclonal

MW

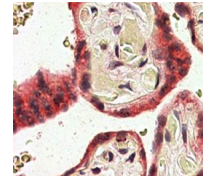
76

Entrez
[11236](#)
Dilution Range

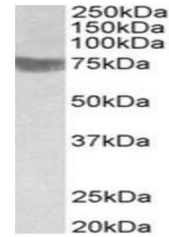
ELISA: 1:16000, WB: 0.3-1 µg/ml, IHC-P: 3-4 µg/ml

Expiration Date

12 months from date of receipt.



Immunohistochemical analysis of formalin...



Western blot analysis of Human Skeletal ...