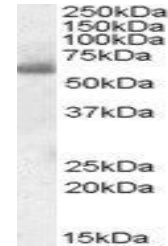


## Product Datasheet

### SH2D3A antibody (orb20171)

<b>Description</b>	Goat polyclonal antibody to SH2D3A
<b>Species/Host</b>	Goat
<b>Reactivity</b>	Human
<b>Conjugation</b>	Unconjugated
<b>Tested Applications</b>	ELISA, IHC, WB
<b>Target</b>	SH2D3A / NSP1
<b>Preservatives</b>	Supplied at 0.5 mg/ml in Tris saline, 0.02% sodium azide, pH 7.3 with 0.5% bovine serum albumin. Aliquot and store at -20°C. Minimize freezing and thawing.
<b>Storage</b>	Aliquot and store at -20°C. Minimize freezing and thawing.
<b>Note</b>	For research use only
<b>Application notes</b>	ELISA: Peptide ELISA: antibody detection limit dilution 1:16000.WB: Approx. 60kDa band observed in Human Lung and Tonsil lysates (calculated MW of 63.1kDa according to NP_005481.2). Recommended concentration: 0.1-0.3 µg/ml.
<b>Protein Sequence</b>	APRAERFEKFQR
<b>Clonality</b>	Polyclonal
<b>MW</b>	63.1
<b>Entrez</b>	<a href="#">10045</a>
<b>Dilution Range</b>	ELISA: 1:16000, WB: 0.1-0.3 µg/ml, IHC-P: 5 µg/ml
<b>Expiration Date</b>	12 months from date of receipt.



orb20171  
(0.1µg/ml)  
staining of  
Human To...