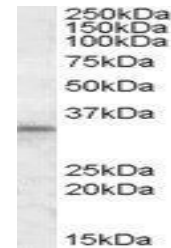


Product Datasheet

HAX1 antibody (orb20158)

Description	Goat polyclonal antibody to HAX1
Species/Host	Goat
Reactivity	Human
Conjugation	Unconjugated
Tested Applications	ELISA, WB
Target	HAX1
Preservatives	Supplied at 0.5 mg/ml in Tris saline, 0.02% sodium azide, pH 7.3 with 0.5% bovine serum albumin. Aliquot and store at -20°C. Minimize freezing and thawing.
Storage	Aliquot and store at -20°C. Minimize freezing and thawing.
Note	For research use only
Application notes	ELISA: Peptide ELISA: antibody detection limit dilution 1:2000.WB: Approx 33kDa band observed in Human Kidney, Liver and Testis lysates (calculated MW of 31.6kDa according to NP_006109.2). Recommended concentration: 1-3 µg/ml.
Protein Sequence	TRHEADSSPRGDPEs
Clonality	Polyclonal
MW	31.6; 26.1
Entrez	10456
Dilution Range	ELISA: 1:2000, WB: 1-3 µg/ml
Expiration Date	12 months from date of receipt.



orb20158
(1µg/ml)
staining of
Human Test...