

Product Datasheet

EWSR1 antibody (orb20151)

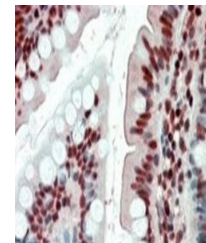
Description	Goat polyclonal antibody to EWSR1
Species/Host	Goat
Reactivity	Bovine, Human, Mouse, Porcine, Rat
Conjugation	Unconjugated
Tested Applications	ELISA, IHC, WB
Target	EWS / EWSR1
Preservatives	Supplied at 0.5 mg/ml in Tris saline, 0.02% sodium azide, pH 7.3 with 0.5% bovine serum albumin. Aliquot and store at -20°C. Minimize freezing and thawing.
Storage	Aliquot and store at -20°C. Minimize freezing and thawing.
Note	For research use only
Application notes	ELISA: Peptide ELISA: antibody detection limit dilution 1:16000.WB: Approx. 90kDa band observed in Nuclear lysates of cell line HeLa (calculated MW of 68.5kDa according to NP_053733.1). The observed molecular weight corresponds to earlier findings with different antibodies from other commercial sources. Recommended concentration: 1-3 µg/ml.
Protein Sequence	TSYDQSSYSQQNTYG
Clonality	Polyclonal
MW	69.0; 68.5; 68.4; 62.5; 37.6
Entrez	2130
Dilution Range	ELISA: 1:64000, WB: 0.3-1 µg/ml
Expiration Date	12 months from date of receipt.



Western blot analysis of nuclear HeLa ly...



Western blot analysis of HeLa lysate usi...



Immunohistochemical staining of Human Sm...