

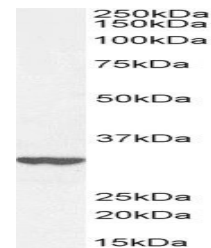
Product Datasheet

ITM2B antibody (orb20142)

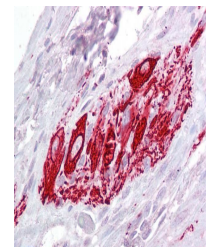
Description	Goat polyclonal antibody to ITM2B
Species/Host	Goat
Reactivity	Bovine, Human, Mouse, Rat
Conjugation	Unconjugated
Tested Applications	ELISA, FC, IF, IHC, WB
Target	ITM2B
Preservatives	Supplied at 0.5 mg/ml in Tris saline, 0.02% sodium azide, pH 7.3 with 0.5% bovine serum albumin. Aliquot and store at -20°C. Minimize freezing and thawing.
Storage	Aliquot and store at -20°C. Minimize freezing and thawing.
Note	For research use only
Application notes	ELISA: Peptide ELISA: antibody detection limit dilution 1:8000.WB: Approx. 33kDa band observed in Human Brain (Cerebellum and Hippocampus) lysates (calculated MW of 30.3kDa according to NP_068839.1). Recommended concentration: 1-3 µg/ml.
Protein Sequence	HDKETYKLQRRETIK
Clonality	Polyclonal
MW	30.3
Entrez	9445
Dilution Range	ELISA: 1:8000, WB: 0.1-0.3 µg/ml, IHC-P: 2.5 µg/ml
Expiration Date	12 months from date of receipt.



orb20142 (1ug/ml) staining of Human Hipp...



WB analysis of HepG2 cell lysate using I...



Immunohistochemical staining of Human Sm...