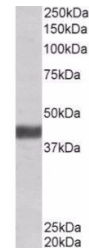


## Product Datasheet

### FBX032 antibody (orb20141)

<b>Description</b>	Goat polyclonal antibody to FBX032
<b>Species/Host</b>	Goat
<b>Reactivity</b>	Bovine, Human, Mouse, Porcine, Rat
<b>Conjugation</b>	Unconjugated
<b>Tested Applications</b>	ELISA, WB
<b>Target</b>	FBX032
<b>Preservatives</b>	Supplied at 0.5 mg/ml in Tris saline, 0.02% sodium azide, pH 7.3 with 0.5% bovine serum albumin. Aliquot and store at -20°C. Minimize freezing and thawing.
<b>Storage</b>	Aliquot and store at -20°C. Minimize freezing and thawing.
<b>Note</b>	For research use only
<b>Application notes</b>	ELISA: Peptide ELISA: antibody detection limit dilution 1:32000.WB: Approx. 40kDa band observed in Human and Mouse Skeletal Muscle lysates (calculated MW of 41.6kDa according to Human NP_478136.1 and of 41.5kDa according to Mouse NP_080622.1). Recommended concentration: 0.1-0.3 µg/ml.
<b>Protein Sequence</b>	NSKTKTQYFHQEK
<b>Clonality</b>	Polyclonal
<b>MW</b>	41.6; 24.7
<b>Entrez</b>	<b>114907</b>
<b>Dilution Range</b>	ELISA: 1:16000, WB: 0.3-1 µg/ml
<b>Expiration Date</b>	12 months from date of receipt.



Western blot analysis of Mouse Skeletal ...