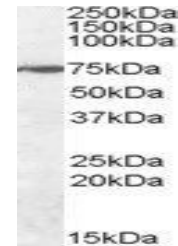


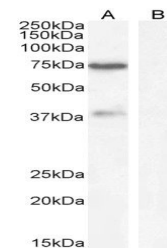
Product Datasheet

WIZ antibody (orb20136)

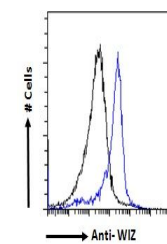
Description	Goat polyclonal to WIZ
Species/Host	Goat
Reactivity	Human, Mouse, Rat
Conjugation	Unconjugated
Tested Applications	ELISA, FC, WB
Target	WIZ
Preservatives	Supplied at 0.5 mg/ml in Tris saline, 0.02% sodium azide, pH 7.3 with 0.5% bovine serum albumin. Aliquot and store at -20°C. Minimize freezing and thawing.
Storage	Aliquot and store at -20°C. Minimize freezing and thawing.
Note	For research use only
Application notes	ELISA: Peptide ELISA: antibody detection limit dilution 1:2000.WB: Approx 75kDa band observed in Human Brain (Cerebellum) lysates (calculated MW of 85.4kDa according to NP_067064.2). Recommended concentration: 0.3-1 µg/ml.
Protein Sequence	RSYIQGGRPFKKFR
Clonality	Polyclonal
MW	85.4; 89.4
Entrez	58525
Dilution Range	ELISA: 1:2000, WB: 0.3-1 µg/ml, IHC-P: 10ug/ml
Expiration Date	12 months from date of receipt.



orb20136
(0.3ug/ml)
staining of
Human Ce...



WB analysis
of Human
Cerebellum
lysate u...



Flow
cytometric
analysis of
HeLa cells u...