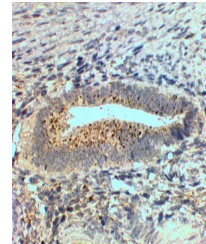


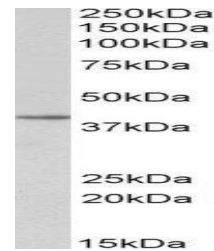
Product Datasheet

SFRP4 antibody (orb20135)

Description	Goat polyclonal antibody against SFRP4
Species/Host	Goat
Reactivity	Bovine, Human, Mouse, Porcine, Rat
Conjugation	Unconjugated
Tested Applications	ELISA, IHC, WB
Target	SFRP4
Preservatives	Supplied at 0.5 mg/ml in Tris saline, 0.02% sodium azide, pH 7.3 with 0.5% bovine serum albumin. Aliquot and store at -20°C. Minimize freezing and thawing.
Storage	Aliquot and store at -20°C. Minimize freezing and thawing.
Note	For research use only
Application notes	ELISA: Peptide ELISA: antibody detection limit dilution 1:16000.WB: Approx. 40kDa band observed in Human Uterus lysates (calculated MW of 39.8kDa according to NP_003005.2). Recommended concentration: 0.3-1 µg/ml.
Protein Sequence	TNSSCQCPHILPHQD
Clonality	Polyclonal
MW	39.8
Entrez	6424
Dilution Range	ELISA: 1:32000, WB: 1-3 µg/ml, IHC-P: 2-4µg/ml
Expiration Date	12 months from date of receipt.



Immunohistochemical analysis of paraffin...



Western blot analysis of staining of Hum...