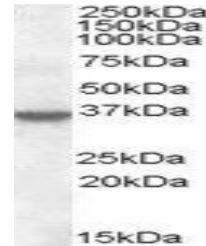


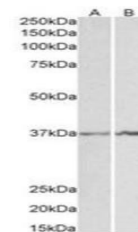
Product Datasheet

Annexin I antibody (orb20132)

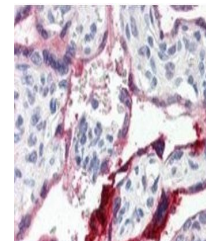
Description	Goat polyclonal to Annexin I
Species/Host	Goat
Reactivity	Bovine, Canine, Human, Mouse, Porcine, Rat
Conjugation	Unconjugated
Tested Applications	ELISA, WB
Target	Annexin I
Preservatives	Supplied at 0.5 mg/ml in Tris saline, 0.02% sodium azide, pH 7.3 with 0.5% bovine serum albumin. Aliquot and store at -20°C. Minimize freezing and thawing.
Storage	Aliquot and store at -20°C. Minimize freezing and thawing.
Note	For research use only
Application notes	ELISA: Peptide ELISA: antibody detection limit dilution 1:32000.WB: Approx 35kDa band observed in Human lysates of cell lines A431 and K562 (calculated MW of 38.7kDa according to NP_000691.1). The observed molecular weight corresponds to earlier findings in literature with different antibodies (Paweletz et al , Cancer Res. 2000 Nov15;60(22):6293-7. PMID: 11103786). Recommended concentration: 0.5-1.5 µg/ml.
Protein Sequence	CQAILDETKGDYEK
Clonality	Polyclonal
MW	38.7
Entrez	301
Dilution Range	ELISA: 1:4000, WB: 1-3 µg/ml
Expiration Date	12 months from date of receipt.



Western blot analysis of A431 lysate usi...



Western blot analysis of K562 (Lane 1) a...



Immunohistochemical staining of Human Pl...