

---

## Product Datasheet

### S100A9 antibody (orb20117)

**Description**

Goat polyclonal antibody to S100A9

**Species/Host**

Goat

**Reactivity**

Human

**Conjugation**

Unconjugated

**Tested**

ELISA, FC, IF, IHC, WB

**Applications**
**Target**

S100A9

**Preservatives**

Supplied at 0.5 mg/ml in Tris saline, 0.02% sodium azide, pH 7.3 with 0.5% bovine serum albumin. Aliquot and store at -20°C. Minimize freezing and thawing.

**Storage**

Aliquot and store at -20°C. Minimize freezing and thawing.

**Note**

For research use only

**Application notes**

ELISA: Peptide ELISA: antibody detection limit dilution 1:8000. IHC: In paraffin embedded Human Lung shows nuclear staining in select cells, Recommended concentration, 2-4ug/ml. WB: Approx 16kDa band observed in Human Peripheral Blood Mononucleocytes lysates (calculated MW of 13.2kDa according to NP\_002956.1). The observed molecular weight corresponds to earlier findings (~15kDa) in literature with different antibodies (McCormick et al, Biol Chem. 2005 Dec 16;280(50):41521-9.; PMID: 16216873). Recommended concentration: 0.3-1 µg/ml.

**Protein Sequence**

DTNADKQLSFEEF

**Clonality**

Polyclonal

**MW**

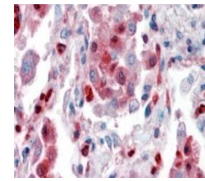
13.2

**Entrez**
**6280**
**Dilution Range**

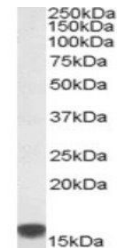
ELISA: 1:8000, WB: 0.5-2 µg/ml, IHC-P: 2.5ug/ml

**Expiration Date**

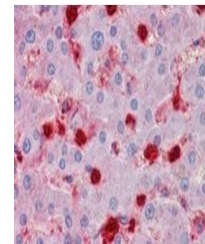
12 months from date of receipt.



Immunohistochemical staining of paraffin...



Western blot analysis of Human Periphera...



Immunohistochemical staining of Human Li...