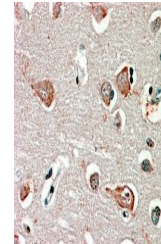


## Product Datasheet

### GABRB3 antibody (orb20106)

<b>Description</b>	Goat polyclonal antibody to GABRB3
<b>Species/Host</b>	Goat
<b>Reactivity</b>	Bovine, Canine, Human, Mouse, Rat
<b>Conjugation</b>	Unconjugated
<b>Tested Applications</b>	ELISA, IHC
<b>Target</b>	GABRB3
<b>Preservatives</b>	Supplied at 0.5 mg/ml in Tris saline, 0.02% sodium azide, pH 7.3 with 0.5% bovine serum albumin. Aliquot and store at -20°C. Minimize freezing and thawing.
<b>Storage</b>	Aliquot and store at -20°C. Minimize freezing and thawing.
<b>Note</b>	For research use only
<b>Application notes</b>	ELISA: Peptide ELISA: antibody detection limit dilution 1:8000.IHC: In paraffin embedded Human Cortex shows patchy staining near or at the neuronal cell membrane.. Recommended concentration, 2-4ug/ml.WB: Preliminary experiments in Human Brain (Cerebral Cortex, Frontal Cortex and Cerebellum) lysates gave no specific signal but low background (at antibody concentration up to 1 µg/ml). We would appreciate any feedback from people in the field - have any results been reported with other antibodies/lysates
<b>Protein Sequence</b>	EKTAKAKNDRSK
<b>Clonality</b>	Polyclonal
<b>MW</b>	54.1; 54.4
<b>Entrez</b>	<b>2562</b>
<b>Dilution Range</b>	ELISA: 1:8000, WB: 1 µg/ml, IHC-P: 2-4µg/ml
<b>Expiration Date</b>	12 months from date of receipt.



orb20106  
(2.5ug/ml)  
staining of  
paraffin...