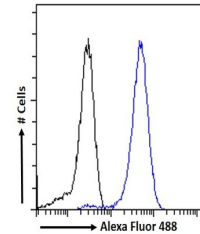


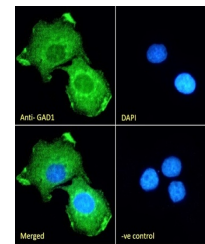
Product Datasheet

GAD1 antibody (orb20081)

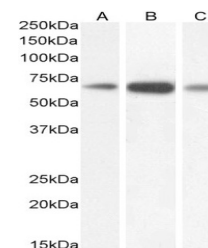
Description	Goat polyclonal antibody to GAD1
Species/Host	Goat
Reactivity	Bovine, Canine, Human, Mouse, Porcine, Rat
Conjugation	Unconjugated
Tested Applications	ELISA, FC, IF, WB
Target	GAD1 (isoform GAD67)
Preservatives	Supplied at 0.5 mg/ml in Tris saline, 0.02% sodium azide, pH 7.3 with 0.5% bovine serum albumin. Aliquot and store at -20°C. Minimize freezing and thawing.
Storage	Aliquot and store at -20°C. Minimize freezing and thawing.
Note	For research use only
Application notes	ELISA: Peptide ELISA: antibody detection limit dilution 1:8000.WB: Approx. 70kDa band observed in Human Brain (Cerebellum) and in Mouse and Rat Brain lysates (calculated MW of 66.9kDa according to Human NP_000808.2 and 66.6kDa according to Mouse NP_032103.2). Recommended concentration: 0.3-1 µg/ml.
Protein Sequence	PDSPQRREKLHK
Clonality	Polyclonal
MW	66.9
Entrez	2571
Dilution Range	ELISA: 1:32000, WB: 0.5-1.5 µg/ml
Expiration Date	12 months from date of receipt.



orb20081 Flow cytometric analysis of par...



orb20081 Immunofluorescence analysis of ...



orb20081 (1µg/ml) staining of Human Cer...