

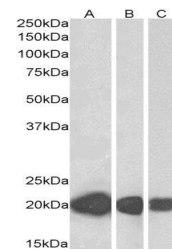
## Product Datasheet

### CSRP3 antibody (orb20080)

<b>Description</b>	Goat polyclonal to CSRP3
<b>Species/Host</b>	Goat
<b>Reactivity</b>	Bovine, Canine, Human, Mouse, Rat
<b>Conjugation</b>	Unconjugated
<b>Tested Applications</b>	ELISA, IHC, WB
<b>Target</b>	CSRP3
<b>Preservatives</b>	Supplied at 0.5 mg/ml in Tris saline, 0.02% sodium azide, pH 7.3 with 0.5% bovine serum albumin. Aliquot and store at -20°C. Minimize freezing and thawing.
<b>Storage</b>	Aliquot and store at -20°C. Minimize freezing and thawing.
<b>Note</b>	For research use only
<b>Application notes</b>	ELISA: Peptide ELISA: antibody detection limit dilution 1:32000.WB: Approx. 20kDa band observed in Human, Mouse and Rat Heart lysates (calculated MW of 21.0kDa according to Human NP_003467.1 and 20.8kDa according to Rat NP_476485.1). Recommended concentration: 0.01-0.03 µg/ml.
<b>Protein Sequence</b>	CGKSLESTNVTDKD
<b>Clonality</b>	Polyclonal
<b>MW</b>	21
<b>Entrez</b>	<b>8048</b>
<b>Dilution Range</b>	ELISA: 1:32000, WB: 0.01-0.03 µg/ml, IHC-P: 2.5 µg/ml
<b>Expiration Date</b>	12 months from date of receipt.



orb20080  
(0.01ug/ml)  
staining of  
Rat Hea...



Western blot  
analysis of  
Human  
(Lane1), ...