

---

## Product Datasheet

### LIPG antibody (orb20030)

**Description**

Goat polyclonal antibody to LIPG

**Species/Host**

Goat

**Reactivity**

Human

**Conjugation**

Unconjugated

**Tested**

ELISA, WB

**Applications**
**Target**

Endothelial lipase

**Preservatives**

Supplied at 0.5 mg/ml in Tris saline, 0.02% sodium azide, pH 7.3 with 0.5% bovine serum albumin. Aliquot and store at -20°C. Minimize freezing and thawing.

**Storage**

Aliquot and store at -20°C. Minimize freezing and thawing.

**Note**

For research use only

**Application notes**

ELISA: Peptide ELISA: antibody detection limit dilution 1:16000. WB: Approx. 70kDa band observed in Human Liver lysates (calculated MW of 56.8kDa according to NP\_006024.1). The observed molecular weight corresponds to earlier findings in literature with different antibodies (Gauster et al , J Clin Endocrinol Metab. 2007 Jun;92(6):2256-63. Epub 2007 Mar 13.; PMID: 17356047). Recommended concentration: 0.3-1 µg/ml. An additional band of unknown identity was also consistently observed at 30kDa. This band was successfully blocked by incubation with the immunising peptide. We would appreciate any feedback from people in the field - have any such results been reported with other antibodies/lysates Have any further splice variants/modified forms been reported

**Protein Sequence**

RFNLRTSKDPEHEG

**Clonality**

Polyclonal

**MW**

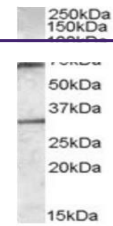
56.8

**Entrez**
[9388](#)
**Dilution Range**

ELISA: 1:16000, WB: 0.3-1 µg/ml

**Expiration Date**

12 months from date of receipt.



Western blot analysis of Human Liver lys...