

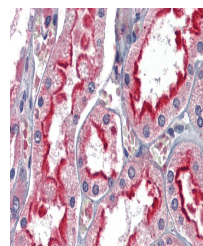
Product Datasheet

APOBEC3G antibody (orb20027)

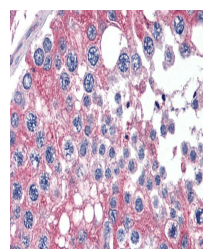
Description	Goat polyclonal antibody to APOBEC3G
Species/Host	Goat
Reactivity	Human
Conjugation	Unconjugated
Tested Applications	ELISA, IHC, WB
Target	APOBEC3G
Preservatives	Supplied at 0.5 mg/ml in Tris saline, 0.02% sodium azide, pH 7.3 with 0.5% bovine serum albumin. Aliquot and store at -20°C. Minimize freezing and thawing.
Storage	Aliquot and store at -20°C. Minimize freezing and thawing.
Note	For research use only
Application notes	ELISA: Peptide ELISA: antibody detection limit dilution 1:16000.WB: Approx. 45kDa band observed in lysates of cell line Daudi (calculated MW of 46.4kDa according to NP_068594.1). Recommended concentration: 0.5-1.5 µg/ml.
Protein Sequence	DEHSQDLSGRLR
Clonality	Polyclonal
MW	46.4
Entrez	60489
Dilution Range	ELISA: 1:16000, WB: 0.5-1.5 µg/ml, IHC-P: 2.5 µg/ml
Expiration Date	12 months from date of receipt.



orb20027 (0.5ug/ml) staining of Daudi ly...



Immunohistochemical staining of Human Ki...



Immunohistochemical staining of Human Te...