

## Product Datasheet

### HOXD10 antibody (orb20012)

## Description

Goat polyclonal antibody to HOXD10

## Species/Host

Goat

## Reactivity

Bovine, Equine, Human, Mouse, Rat

## Conjugation

Unconjugated

## Tested

ELISA, FC, IHC

## Applications

## Target

HOXD10

## Preservatives

Supplied at 0.5 mg/ml in Tris saline, 0.02% sodium azide, pH 7.3 with 0.5% bovine serum albumin. Aliquot and store at -20°C. Minimize freezing and thawing.

## Storage

Aliquot and store at -20°C. Minimize freezing and thawing.

## Note

For research use only

## Application notes

ELISA: Peptide ELISA: antibody detection limit dilution 1:32000. WB: Approx. 37 kDa band observed in Human Kidney lysates (calculated MW of 38.4 kDa according to NP\_002139.2). Recommended concentration: 0.2-0.6 µg/ml. Additional bands of unknown identity were also consistently observed at 90+26 kDa. These bands were successfully blocked by incubation with the immunising peptide. We would appreciate any feedback from people in the field - have any such results been reported with other antibodies/lysates Have any further splice variants/modified forms been reported

## Protein Sequence

PNRSCRIEQPVTQQ

## Clonality

Polyclonal

## MW

38.4

## Entrez

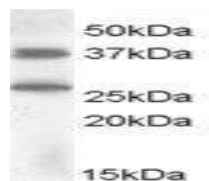
[3236](#)

## Dilution Range

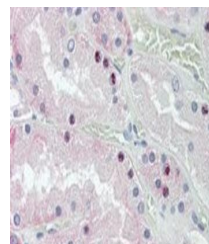
ELISA: 1:32000, WB: 0.2-0.6 µg/ml, IHC-P: 3-5µg/ml

## Expiration Date

12 months from date of receipt.

Western blot analysis  
of Human Kidney ly...



Immunohistochemical  
staining of Human  
Ki...