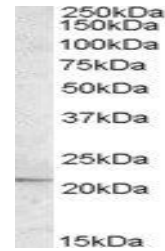


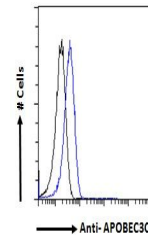
Product Datasheet

APOBEC3C antibody (orb19979)

Description	Goat polyclonal antibody to APOBEC3C
Species/Host	Goat
Reactivity	Human
Conjugation	Unconjugated
Tested Applications	ELISA, FC, WB
Target	APOBEC3C (C-term)
Preservatives	Supplied at 0.5 mg/ml in Tris saline, 0.02% sodium azide, pH 7.3 with 0.5% bovine serum albumin. Aliquot and store at -20°C. Minimize freezing and thawing.
Storage	Aliquot and store at -20°C. Minimize freezing and thawing.
Note	For research use only
Application notes	ELISA: Peptide ELISA: antibody detection limit dilution 1:1000.WB: Approx. 22kDa band observed in lysates of cell line DAUDI (calculated MW of 22.8kDa according to NP_055323.2). Recommended concentration: 0.5-1.5 µg/ml.
Protein Sequence	RLLKRRLRESLQ
Clonality	Polyclonal
MW	22.8
Entrez	27350
Dilution Range	ELISA: 1:1000, WB: 0.5-1.5 µg/ml, FACS: 10ug/ml
Expiration Date	12 months from date of receipt.



Western blot analysis of Daudi lysate US...



Flow cytometric analysis of HeLa cells u...