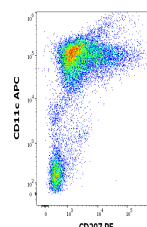


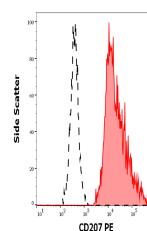
## Product Datasheet

### CD207 Antibody (PE) (orb1993740)

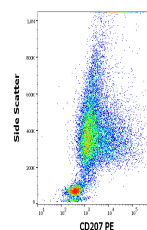
<b>Description</b>	CD207 is a 40 kDa type II transmembrane glycoprotein of the C-type lectin family. It binds to mannos...
<b>Reactivity</b>	Human, Primate
<b>Conjugation</b>	PE
<b>Tested Applications</b>	FC
<b>Immunogen</b>	Fusion protein of human CD207 extracellular part and IgG Fc fragment
<b>Target</b>	CD207
<b>Preservatives</b>	Stabilizing phosphate buffered saline (PBS), pH 7.4, 15 mM sodium azide
<b>Storage</b>	Store at 2-8°C. Protect from prolonged exposure to light. Do not freeze.
<b>Note</b>	For research use only
<b>Application notes</b>	Flow cytometry: The reagent is designed for analysis of human blood cells using 10 µl reagent / 100 µl of whole blood or 10 <sup>6</sup> cells in a suspension. The content of a vial (1 ml) is sufficient for 100 tests. Extracellular and intracellular staining.
<b>Isotype</b>	Mouse IgG1 lambda
<b>Clonality</b>	Monoclonal
<b>Uniprot ID</b>	<a href="#">Q9UJ71</a>
<b>Entrez</b>	<a href="#">50489</a>
<b>Expiration Date</b>	12 months from date of receipt.



Flow cytometry multicolor surface staini...



Separation of human CD207 positive CD11c...



Flow cytometry surface staining pattern ...