
Product Datasheet

RETNLB antibody (orb19920)

Description

Goat polyclonal antibody to RETNLB


Species/Host

Goat

Reactivity

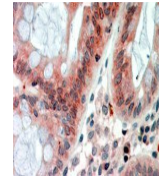
Human

Conjugation

Unconjugated

Tested

ELISA, IHC

Applications

 orb19920
(2.5g/ml)
staining of
paraffin ...

Target

RELMbeta

Preservatives

Supplied at 0.5 mg/ml in Tris saline, 0.02% sodium azide, pH 7.3 with 0.5% bovine serum albumin. Aliquot and store at -20°C. Minimize freezing and thawing.

Storage

Aliquot and store at -20°C. Minimize freezing and thawing.

Note

For research use only

Application notes

ELISA: Peptide ELISA: antibody detection limit dilution 1:128000.IHC: In paraffin embedded Human Colon shows textured staining of cytoplasm in enterocytes. Recommended concentration, 2-4ug/ml.WB: Preliminary experiments gave an approx 35kDa band in Human Ileum and Duodenum lysates after 0.1 µg/ml antibody staining. Please note that currently we cannot find an explanation in the literature for the band we observe given the calculated size of 11.7kDa according to NP_115968.1. The 35kDa band was successfully blocked by incubation with the immunizing peptide. We would appreciate any feedback from people in the field - have any results been reported with other antibodies/lysates Have any further splice variants/modified forms been reported

Protein Sequence

DSVMDKKIKDVLNS

Clonality

Polyclonal

MW

11.7

Entrez
[84666](#)
Dilution Range

ELISA: 1:128000, WB: 0.1 µg/ml, IHC-P: 2-4µg/ml

Expiration Date

12 months from date of receipt.