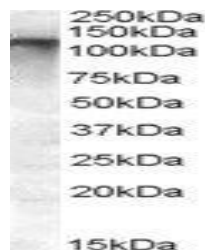


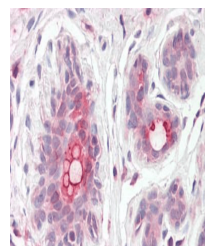
Product Datasheet

ABCC11 antibody (orb19915)

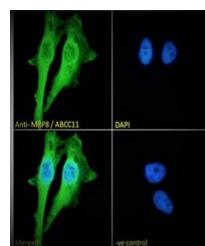
Description	Goat polyclonal antibody to ABCC11
Species/Host	Goat
Reactivity	Human
Conjugation	Unconjugated
Tested Applications	ELISA, FC, IF, IHC, WB
Target	MRP8 / ABCC11
Preservatives	Supplied at 0.5 mg/ml in Tris saline, 0.02% sodium azide, pH 7.3 with 0.5% bovine serum albumin. Aliquot and store at -20°C. Minimize freezing and thawing.
Storage	Aliquot and store at -20°C. Minimize freezing and thawing.
Note	For research use only
Application notes	ELISA: Peptide ELISA: antibody detection limit dilution 1:32000.WB: Approx. 125kDa band observed in Human Breast and Human Testis lysates (calculated MW of 150kDa according to NP_660187.1). Recommended concentration: 0.5-1.5 µg/ml.
Protein Sequence	KVVEFDRPEVLRK
Clonality	Polyclonal
MW	154; 150; 154
Entrez	85320
Dilution Range	ELISA: 1:32000, WB: 0.5-1.5 µg/ml, IHC-P: 3.75 µg/ml
Expiration Date	12 months from date of receipt.



Western blot analysis of Human Testes ly...



Immunohistochemical staining of Human Br...



Immunofluorescence analysis of paraforma...