

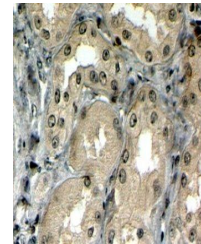
Product Datasheet

ABCC5 antibody (orb19895)

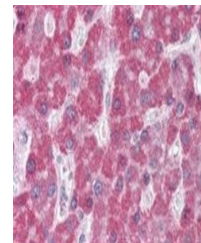
Description	Goat polyclonal antibody to ABCC5
Species/Host	Goat
Reactivity	Bovine, Canine, Human, Mouse, Porcine, Rat
Conjugation	Unconjugated
Tested Applications	ELISA, IHC
Target	MRP5
Preservatives	Supplied at 0.5 mg/ml in Tris saline, 0.02% sodium azide, pH 7.3 with 0.5% bovine serum albumin. Aliquot and store at -20°C. Minimize freezing and thawing.
Storage	Aliquot and store at -20°C. Minimize freezing and thawing.
Note	For research use only
Application notes	ELISA: Peptide ELISA: antibody detection limit dilution 1:32000.IHC: In paraffin embedded Human Kidney shows membranous staining in DCT. Recommended concentration, 4-6ug/ml.WB: Approx. 150kDa band observed in Human Brain (Frnotal Cortex) and Mouse Brain lysates (calculated MW of 161kDa according to NP_005679.2). Recommended concentration: 0.5-1.5 µg/ml.
Protein Sequence	KDIDIGKEYIIP
Clonality	Polyclonal
MW	161; 23.7
Entrez	10057
Dilution Range	ELISA: 1:128000, IHC-P: 5 µg/ml
Expiration Date	12 months from date of receipt.



Western blot analysis of Human Frontal C...



Immunohistochemical staining of paraffin...



Immunohistochemical staining of Human Li...