

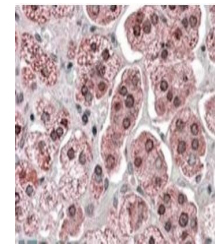
Product Datasheet

KPNA6 antibody (orb19871)

Description	Goat polyclonal antibody to KPNA6
Species/Host	Goat
Reactivity	Bovine, Canine, Human, Mouse, Porcine, Rat
Conjugation	Unconjugated
Tested Applications	ELISA, IHC, WB
Target	KPNA6
Preservatives	Supplied at 0.5 mg/ml in Tris saline, 0.02% sodium azide, pH 7.3 with 0.5% bovine serum albumin. Aliquot and store at -20°C. Minimize freezing and thawing.
Storage	Aliquot and store at -20°C. Minimize freezing and thawing.
Note	For research use only
Application notes	ELISA: Peptide ELISA: antibody detection limit dilution 1:128000.WB: Approx 60kDa band observed in Human Skeletal Muscle lysates (calculated MW of 60.0kDa according to NP_036448.1). Recommended concentration:0.1-0.3 µg/ml. Some minor background is detected and is blocked by the immunizing peptide. We call for caution when used for other assays than Western blot.
Protein Sequence	STTGESVITREMVE
Clonality	Polyclonal
MW	60
Entrez	23633
Dilution Range	ELISA: 1:128000, WB: 0.1-0.3 µg/ml, IHC-P: 3-6µg/ml
Expiration Date	12 months from date of receipt.



Western blot analysis of Human Muscle ly...



Immunohistochemical staining of Human Ad...