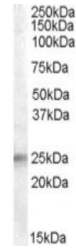


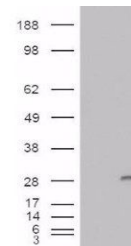
Product Datasheet

IGFBP6 antibody (orb19859)

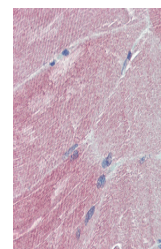
Description	Goat polyclonal antibody to IGFBP6
Species/Host	Goat
Reactivity	Bovine, Human
Conjugation	Unconjugated
Tested Applications	ELISA, IHC, WB
Target	IGFBP6
Preservatives	Supplied at 0.5 mg/ml in Tris saline, 0.02% sodium azide, pH 7.3 with 0.5% bovine serum albumin. Aliquot and store at -20°C. Minimize freezing and thawing.
Storage	Aliquot and store at -20°C. Minimize freezing and thawing.
Note	For research use only
Application notes	ELISA: Peptide ELISA: antibody detection limit dilution 1:32000.WB: Approx. 25kDa band observed in Human Adrenal Gland lysates (calculated MW of 25.3kDa according to NP_002169.1). In transfected HEK293 transiently expressing IGFBP6 a band of approx. 29kDa is observed. This band is not observed in the non-transfected HEK293. Recommended concentration: 0.5-1.5 µg/ml.
Protein Sequence	RPQDVNRRDQQRNP
Clonality	Polyclonal
MW	25.3
Entrez	3489
Dilution Range	ELISA: 1:32000, WB: 0.5-1.5 µg/ml, IHC-P: 5 µg/ml
Expiration Date	12 months from date of receipt.



Western blot analysis of Human Adrenal G...



Western blot analysis of HEK293 lysate u...



orb19859 (5µg/ml) staining of paraffin ...