

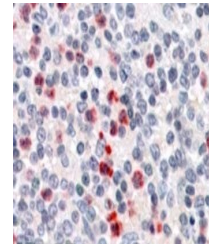
## Product Datasheet

### PGLYRP1 antibody (orb19854)

<b>Description</b>	Goat polyclonal antibody to PGLYRP1
<b>Species/Host</b>	Goat
<b>Reactivity</b>	Canine, Human
<b>Conjugation</b>	Unconjugated
<b>Tested Applications</b>	ELISA, IHC, WB
<b>Target</b>	PGRP-S
<b>Preservatives</b>	Supplied at 0.5 mg/ml in Tris saline, 0.02% sodium azide, pH 7.3 with 0.5% bovine serum albumin. Aliquot and store at -20°C. Minimize freezing and thawing.
<b>Storage</b>	Aliquot and store at -20°C. Minimize freezing and thawing.
<b>Note</b>	For research use only
<b>Application notes</b>	ELISA: Peptide ELISA: antibody detection limit dilution 1:4000.WB: Approx 30kDa band observed in lysates of cell line Jurkat (calculated MW of 21.7kDa according to NP_005082.1). The observed molecular weight corresponds to earlier findings in literature with different antibodies (Lu et al, J Biol Chem. 2006 Mar 3;281(9):5895-907; PMID: 16354652). Recommended concentration: 0.3-1 µg/ml.
<b>Protein Sequence</b>	PGNQLYHLIQN
<b>Clonality</b>	Polyclonal
<b>MW</b>	21.7
<b>Entrez</b>	<b>8993</b>
<b>Dilution Range</b>	ELISA: 1:4000, WB: 0.3-1 µg/ml, IHC-P: 3-6µg/ml
<b>Expiration Date</b>	12 months from date of receipt.



Western blot analysis of Jurkat lysate u...



Immunohistochemical staining of Human Sp...