

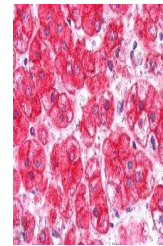
Product Datasheet

EXOC7 antibody (orb19837)

Description	Goat polyclonal antibody to EXOC7
Species/Host	Goat
Reactivity	Bovine, Human, Mouse, Porcine, Rat
Conjugation	Unconjugated
Tested Applications	ELISA, IHC, WB
Target	EXOC7
Preservatives	Supplied at 0.5 mg/ml in Tris saline, 0.02% sodium azide, pH 7.3 with 0.5% bovine serum albumin. Aliquot and store at -20°C. Minimize freezing and thawing.
Storage	Aliquot and store at -20°C. Minimize freezing and thawing.
Note	For research use only
Application notes	ELISA: Peptide ELISA: antibody detection limit dilution 1:16000.IHC: In paraffin embedded Human Adrenal Gland shows staining of cytoplasm membranes and cytoplasm of secretory cells in the medulla . Recommended concentration, 5-10ug/ml.WB: Approx 70kDa band observed in Human Lung lysates (calculated MW of 74.7kDa according to NP_056034.2). Recommended concentration: 0.5-1.5 µg/ml.
Protein Sequence	DNIKNDPDKKEYN
Clonality	Polyclonal
MW	78.1; 74.7; 83.4; 80.6; 77.3
Entrez	23265
Dilution Range	ELISA: 1:16000, WB: 0.5-1.5 µg/ml, IHC-P: 5-10µg/ml
Expiration Date	12 months from date of receipt.



orb19837
(0.5ug/ml)
staining of
Human Lu...



orb19837
(0.5ug/ml)
staining of
paraffin...