
Product Datasheet

ATG16L1 antibody (orb19825)

Description

Goat polyclonal antibody to ATG16L1

Species/Host

Goat

Reactivity

Canine, Human, Mouse, Rat

Conjugation

Unconjugated

Tested

ELISA, IHC, WB

Applications
Target

ATG16L1

Preservatives

Supplied at 0.5 mg/ml in Tris saline, 0.02% sodium azide, pH 7.3 with 0.5% bovine serum albumin. Aliquot and store at -20°C. Minimize freezing and thawing.

Storage

Aliquot and store at -20°C. Minimize freezing and thawing.

Note

For research use only

Application notes

ELISA: Peptide ELISA: antibody detection limit dilution 1:32000. WB: Preliminary experiments gave an approx 48kDa band in Human Kidney, Liver and Spleen lysates after 0.3 µg/ml antibody staining. Please note that currently we cannot find an explanation in the literature for the band we observe given the calculated size of 68.3kDa according to NP_110430.5 and of 66.3kDa according to NP_060444.3. The 48kDa band was successfully blocked by incubation with the immunizing peptide. We would appreciate any feedback from people in the field - have any results been reported with other antibodies/lysates Have any further splice variants/modified forms been reported

Protein Sequence

KVEKVLQKQSSIN

Clonality

Polyclonal

MW

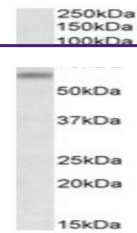
68.3, 66.3

Entrez
[55054](#)
Dilution Range

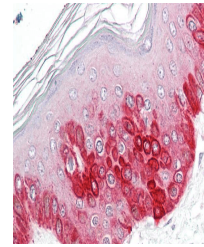
ELISA: 1:32000, WB: 0.01-0.1 µg/ml, IHC-P: 3.75 µg/ml

Expiration Date

12 months from date of receipt.



Western blot analysis of Mouse Brain lys...



Immunohistochemical staining of Human Sk...