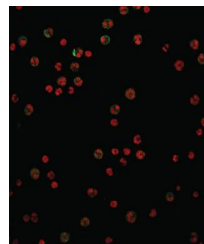


Product Datasheet

CD15, NA antibody (FITC) (orb198236)

Description	Provided as a solution in phosphate buffered saline with 1% BSA and 0.09% sodium azide.
Species/Host	Mouse
Reactivity	Human
Conjugation	FITC
Tested Applications	ICC, IF
Concentration	Titered for flow cytometry
Storage	Product should be stored at 4-8°C. DO NOT FREEZE
Note	For research use only
Application notes	This CD15 antibody is an IgG3 antibody as compared to other CD15 antibodies available which are IgM's. These IgM's cause the cells labeled with them to aggregate in the cytometer and read as one cell, producing lower numbers of cells to be reported. Our CD15 antibody does not cause the cells to aggregate, yielding much more accurate results.
Isotype	IgG3
Clonality	Monoclonal
Hazard Information	This product is intended FOR RESEARCH USE ONLY, and FOR TESTS IN VITRO, not for use in diagnostic or therapeutic procedures involving humans or animals.
Expiration Date	12 months from date of receipt.



Immunofluorescence analysis of human neu...