
Product Datasheet

CD5, CD19 antibody (FITC, PE) (orb198172)

Description

Mouse Polyclonal antibody to CD5, CD19 (FITC, PE)

Species/Host

Mouse

Reactivity

Human

Conjugation

FITC/RPE

Tested

FACS

Applications
Immunogen

CD5=Derived from the hybridization of mouse NS-1/Ag4 myeloma cells with spleen cells of BALB/c mice immunized with human t-acute lymphoblastic leukemia (ALL) cells.

Preservatives

Provided as solution in phosphate buffered saline with 0.08% sodium azide and 0.2% carrier protein

Form/Appearance

Provided as solution in phosphate buffered saline with 0.08% sodium azide and 0.2% carrier protein

Concentration

Titered for flow cytometry

Storage

Product should be stored at 4-8°C. DO NOT FREEZE

Note

For research use only

Application notes

PBMC: Add 10 µl of MAB/10⁶ PBMC in 100 µl PBS. Mix gently and incubate for 15 minutes at 2° to 8°C. Wash twice with PBS and analyze or fix with 0.5% v/v of paraformaldehyde in PBS and analyze. WHOLE BLOOD: Add 10 µl of MAB/100 µl of whole blood. Mix gently and incubate for 15 minutes at room temperature 20°C. Lyse the whole blood. Wash once with PBS and analyze or fix with 0.5% v/v of paraformaldehyde in PBS and analyze. See instrument manufacturer's instructions for Lysed Whole Blood and Immunofluorescence analysis with a flow cytometer or microscope.

Isotype

IgG2a (F)/IgG1 (PE)

Uniprot ID

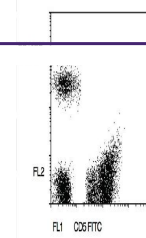
P06127, P15391

Hazard Information

This product is intended FOR RESEARCH USE ONLY, and FOR TESTS IN VITRO, not for use in diagnostic or therapeutic procedures involving humans or animals.

Expiration Date

12 months from date of receipt.



Flow cytometric analysis of Peripheral b...