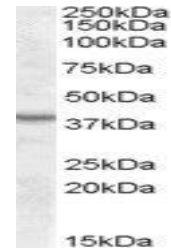


Product Datasheet

ASNA1 antibody (orb19816)

Description	Goat polyclonal antibody to ASNA1
Species/Host	Goat
Reactivity	Bovine, Human, Mouse, Rat
Conjugation	Unconjugated
Tested Applications	ELISA, WB
Target	ASNA1
Preservatives	Supplied at 0.5 mg/ml in Tris saline, 0.02% sodium azide, pH 7.3 with 0.5% bovine serum albumin. Aliquot and store at -20°C. Minimize freezing and thawing.
Storage	Aliquot and store at -20°C. Minimize freezing and thawing.
Note	For research use only
Application notes	ELISA: Peptide ELISA: antibody detection limit dilution 1:2000.WB: Approx 38kDa band observed in Human, Mouse and Rat Kidney lysates (calculated MW of 38.8kDa according to Human NP_004308.2). Recommended concentration: 0.3-1 µg/ml.
Protein Sequence	PHEVRGADKVNT
Clonality	Polyclonal
MW	38.8
Entrez	439
Dilution Range	ELISA: 1:2000, WB: 0.3-1 µg/ml
Expiration Date	12 months from date of receipt.



Western blot analysis of Mouse Kidney lysate...