

## Product Datasheet

### Mouse anti Human CD4 FITC - CD8 PE (orb198131)

<b>Description</b>	Mouse polyclonal antibody to CD4, CD8 (FITC, PE)
<b>Species/Host</b>	Mouse
<b>Reactivity</b>	Human
<b>Conjugation</b>	FITC/RPE
<b>Tested Applications</b>	FACS
<b>Immunogen</b>	CD4=Derived from the hybridization of mouse NS-1 myeloma cells with spleen cells from BALB/c mice immunized with human peripheral blood T lymphocytes.CD8=Derived from the hybridization of mouse NS-1 myeloma cells with spleen cells from BALB/c mice immunized with human peripheral blood T lymphocytes.
<b>Preservatives</b>	Provided as solution in phosphate buffered saline with 0.08% sodium azide and 0.2% carrier protein
<b>Form/Appearance</b>	Provided as solution in phosphate buffered saline with 0.08% sodium azide and 0.2% carrier protein
<b>Concentration</b>	Titered for flow cytometry
<b>Storage</b>	Product should be stored at 4-8°C. DO NOT FREEZE
<b>Note</b>	For research use only
<b>Application notes</b>	PBMC: Add10 µl of MAB/10 <sup>6</sup> PBMC in 100 µl PBS. Mix gently and incubate for 15 minutes at 2 <sup>o</sup> to 8 <sup>o</sup> C. Wash twice with PBS and analyze or fix with 0.5% v/v of paraformaldehyde in PBS and analyze. WHOLE BLOOD: Add10 µl of MAB/100 µl of whole blood. Mix gently and incubate for 15 minutes at room temperature 20 <sup>o</sup> C. Lyse the whole blood. Wash once with PBS and analyze or fix with 0.5% v/v of paraformaldehyde in PBS and analyze. See instrument manufacturer's instructions for Lysed Whole Blood and Immunofluorescence analysis with a flow cytometer or microscope.

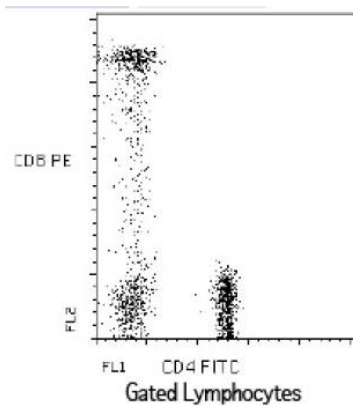
**Biorbyt Ltd.**

7 Signet Court, Swann's Road,  
Cambridge, CB5 8LA, United Kingdom  
Email: [info@biorbyt.com](mailto:info@biorbyt.com), [support@biorbyt.com](mailto:support@biorbyt.com)  
Phone: [+44 \(0\) 1223 859-353](tel:+44(0)1223859353) | Fax: [+1 \(415\) 651-8558](tel:+1(415)6518558)

**Biorbyt LLC.**

68 TW Alexander Drive,  
Durham, NC, 27713, United States  
Email: [info@biorbyt.com](mailto:info@biorbyt.com), [support@biorbyt.com](mailto:support@biorbyt.com)  
Phone: [+1 \(415\) 906-5211](tel:+1(415)9065211) | Fax: [+1 \(415\) 651-8558](tel:+1(415)6518558)

<b>Isotype</b>	IgG1 (F)/IgG1(PE)
<b>Uniprot ID</b>	<b>P01730, P01732</b>
<b>Hazard Information</b>	This product is intended FOR RESEARCH USE ONLY, and FOR TESTS IN VITRO, not for use in diagnostic or therapeutic procedures involving humans or animals.
<b>Expiration Date</b>	12 months from date of receipt.



Flow cytometric analysis of Peripheral Blood Lymphocytes using CD4, CD8 antibody (FITC, PE)

**Biorbyt Ltd.**

7 Signet Court, Swann's Road,  
Cambridge, CB5 8LA, United Kingdom  
Email: [info@biorbyt.com](mailto:info@biorbyt.com), [support@biorbyt.com](mailto:support@biorbyt.com)  
Phone: [+44 \(0\) 1223 859-353](tel:+44(0)1223859353) | Fax: [+1 \(415\) 651-8558](tel:+1(415)6518558)

**Biorbyt LLC.**

68 TW Alexander Drive,  
Durham, NC, 27713, United States  
Email: [info@biorbyt.com](mailto:info@biorbyt.com), [support@biorbyt.com](mailto:support@biorbyt.com)  
Phone: [+1 \(415\) 906-5211](tel:+1(415)9065211) | Fax: [+1 \(415\) 651-8558](tel:+1(415)6518558)