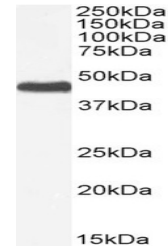


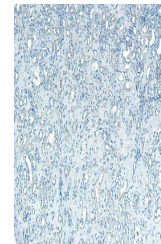
## Product Datasheet

### PNPLA3 antibody (orb19804)

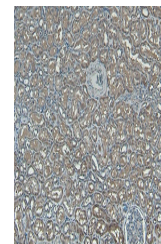
<b>Description</b>	Goat polyclonal antibody to PNPLA3
<b>Species/Host</b>	Goat
<b>Reactivity</b>	Human, Mouse, Rat
<b>Conjugation</b>	Unconjugated
<b>Tested Applications</b>	ELISA, IHC, WB
<b>Target</b>	Pnpla3 / Adiponutrin (mouse)
<b>Preservatives</b>	Supplied at 0.5 mg/ml in Tris saline, 0.02% sodium azide, pH 7.3 with 0.5% bovine serum albumin. Aliquot and store at -20°C. Minimize freezing and thawing.
<b>Storage</b>	Aliquot and store at -20°C. Minimize freezing and thawing.
<b>Note</b>	For research use only
<b>Application notes</b>	ELISA: Peptide ELISA: antibody detection limit dilution 1:128000.WB: Approx 45kDa band observed in Mouse Heart lysates (calculated MW of 42.6kDa according to Human NP_473429.2 and to Mouse NP_473429.2). Recommended concentration: 0.05-0.2 µg/ml.
<b>Protein Sequence</b>	EHDICPKVKSTN
<b>Clonality</b>	Polyclonal
<b>MW</b>	42.6
<b>Entrez</b>	<b>80339</b>
<b>Dilution Range</b>	ELISA: 1:16000, WB: 0.01-0.03 µg/ml, IHC-P: 8 µg/ml
<b>Expiration Date</b>	12 months from date of receipt.



orb19804  
(0.03µg/ml)  
staining of  
Mouse ...



orb19804  
Negative  
Control  
showing  
staini...



orb19804  
(8µg/ml)  
staining of  
paraffin ...