

---

## Product Datasheet

### Integrin beta 1 antibody (orb197998)

**Description**

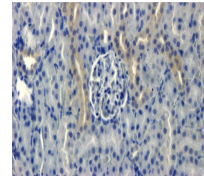
Integrin beta 1 antibody


**Species/Host**

Rabbit

**Reactivity**

Bovine, Canine, Equine, Gallus, Human, Mouse, Porcine, Rat, Sheep



IHC-P image of rat kidney tissue using I...

**Conjugation**

Unconjugated

**Tested Applications**

ELISA, IHC-P

**Immunogen**

KLH conjugated synthetic peptide derived from human Integrin beta 1. Please contact us for the exact immunogen sequence. The peptide is available as orb374836.

**Target**

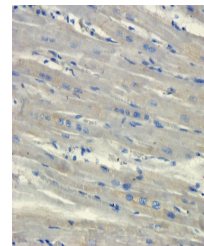
Integrin beta 1

**Form/Appearance**

10 mM PBS, 0.02% sodium azide

**Concentration**

- 100 µg (in 200 µl): 0.5 mg/ml- 200 µg (in 400 µl): 0.5 mg/ml



Immunohistochemical staining of pig hear...

**Storage**

Store at 4°C for up to two weeks. For long term storage, aliquot and store at -20°C, avoid freeze/thaw cycles.

**Note**

For research use only

**Isotype**

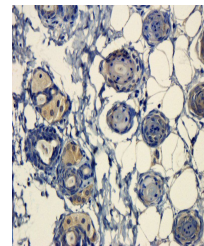
IgG

**Clonality**

Polyclonal

**Purity**

Polyclonal antibodies are purified by peptide affinity chromatography



Immunohistochemical staining of paraffin...

**MW**

88 kDa

**Uniprot ID**
[P05556](#), [P09055](#), [P49134](#)
**NCBI**
[391988](#), [002202](#)
**Entrez**
[3688](#)
**Dilution Range**

IHC-P:1:100

**Expiration Date**

12 months from date of receipt.