

Product Datasheet

NOVA1 antibody (orb19796)

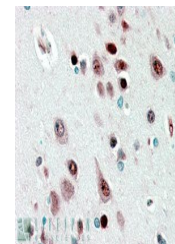
Description	Goat polyclonal antibody to NOVA1
Species/Host	Goat
Reactivity	Human
Conjugation	Unconjugated
Tested Applications	ELISA, IHC, WB
Target	NOVA1
Preservatives	Supplied at 0.5 mg/ml in Tris saline, 0.02% sodium azide, pH 7.3 with 0.5% bovine serum albumin. Aliquot and store at -20°C. Minimize freezing and thawing.
Storage	Aliquot and store at -20°C. Minimize freezing and thawing.
Note	For research use only
Application notes	ELISA: Peptide ELISA: antibody detection limit dilution 1:64000.IHC: In paraffin embedded Human Cerebral Cortex shows staining of selected nuclei. Recommended concentration, 2-4ug/ml.WB: In transfected HEK293 transiently expressing NOVA1 a band of approx. 52kDa is observed. This band is not observed in the non-transfected HEK293. Recommended concentration: 0.01-0.03 µg/ml.
Protein Sequence	REMPQNVAKTEPVS
Clonality	Polyclonal
MW	51.7, 19.5
Entrez	4857
Dilution Range	ELISA: 1:64000, WB: 0.01-0.03 µg/ml, IHC-P: 5 µg/ml
Expiration Date	12 months from date of receipt.



orb19796
(0.01ug/ml)
staining of
Human B...



HEK293
overexpressing
NOVA1
(RC210407)
a...



orb19796
(2.5ug/ml)
staining of
paraffin...