

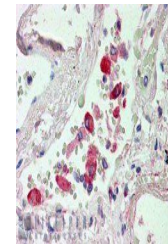
## Product Datasheet

### CES1 antibody (orb19790)

<b>Description</b>	Goat polyclonal antibody to CES1
<b>Species/Host</b>	Goat
<b>Reactivity</b>	Human
<b>Conjugation</b>	Unconjugated
<b>Tested Applications</b>	ELISA, IHC, WB
<b>Target</b>	CES1
<b>Preservatives</b>	Supplied at 0.5 mg/ml in Tris saline, 0.02% sodium azide, pH 7.3 with 0.5% bovine serum albumin. Aliquot and store at -20°C. Minimize freezing and thawing.
<b>Storage</b>	Aliquot and store at -20°C. Minimize freezing and thawing.
<b>Note</b>	For research use only
<b>Application notes</b>	ELISA: Peptide ELISA: antibody detection limit dilution 1:8000.IHC: In paraffin embedded Human Lung shows staining of lymphocytes in the vasculature.. Recommended concentration, 2-3ug/ml.WB: Approx 55-60kDa band observed in Human Liver and Ileum lysates (calculated MW of 62.6kDa according to NP_001020366.1). In transfected HEK293 transiently expressing CES1 a band of approx. 65kDa is observed. This band is not observed in the non-transfected HEK293. Recommended concentration: 0.03-0.1 µg/ml.
<b>Protein Sequence</b>	NTQAAQKLKDKE
<b>Clonality</b>	Polyclonal
<b>MW</b>	62.6; 62.5; 62.4
<b>Entrez</b>	<b>1066</b>
<b>Dilution Range</b>	ELISA: 1:8000, WB: 0.03-0.1 µg/ml, IHC-P: 2-3µg/ml
<b>Expiration Date</b>	12 months from date of receipt.



orb19790  
(0.03ug/ml)  
staining of  
Human L...



orb19790  
(2.5ug/ml)  
staining of  
paraffin...